

# ARAIYS NEWS

WINTER NEWS LETTER 2017



## PRESIDENTS MESSAGE

Greetings and welcome to our Winter Solstice Newsletter for 2017. The solstice marks the 'still' point when the sun has reached its southernmost point at the tropic of Capricorn and begins to climb north again. It is the longest night of the year in the northern hemisphere. It is a festive time where we celebrate the rebirth of light and the beginning of new cycles. We have been very busy in 2017 and are grateful to our clients and talented consultants with whom we have the opportunity to work. Several exciting and beloved projects that we have been fortunate to be a part of are coming to a point of completion. One such project is a 4.8 acre site located in the Village of Southampton. Please read below for a description and pictures prepared by Daria Szalinska. Also, we are happy to welcome Grant Wellman to our team. Grant is an experienced landscape architect who brings an insightful and thoughtful design approach. Please read his bio and the piece he prepared about the use of drones in landscape architecture. Finally, it is with heavy hearts that we bid farewell to our dear friend and colleague Dana Hepler who passed away in November. Dana was a very talented designer and mentor who carried himself with grace through very difficult circumstances. We will always remember his positive, 'can do' attitude with which he approached all his projects. Our thoughts and sympathies are with his family. We wish you and your family peace and good health in this holiday season and a prosperous new year.

-Steven Nieroda, RLA  
Senior Associate

### Current News Topic: Drones in Landscape Architecture

We are happy to welcome Grant Wellman to the Ariays Design team this fall. Grant brings a unique understanding of the site design process and modern technologies used in Landscape Architecture to the firm.

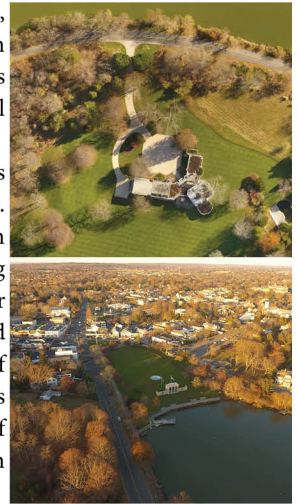


Grant has worked on the East End for the last seven years managing numerous projects with a concentration on large scale residential projects. Prior to his experience in New York, Grant worked for an ASLA award winning firm in Florida and has experience on several projects throughout the Caribbean.

Grant holds a bachelor's degree in Landscape Architecture and minor in Horticulture. He is a Registered Landscape Architect in New York and a LEED Accredited Professional with team experience on LEED Platinum projects.

In an information era full of ever-changing technologies, Landscape Architects are in a unique position to put innovation to use for site design and land planning. Over the past five years drones have evolved from hobbyist's toys to multifunctional tools capable of all sorts of information collecting and analysis.

At Ariays Design, we are now taking advantage of this technology which has trickled down to the commercial market. Using drones, we are now capable of producing high resolution live aerials, terrain models, & topographic maps. By analyzing floor plans provided by the architect, we are able to show our clients images of the view from their future homes. Advanced software can now even be used to make 3D computer models of our project sites. By combining these innovations with our office's integrated field surveying equipment, we are now capable of reaching levels of accuracy that have never before been seen in the field.



### Spotlight: Meadow Lane Residence

The design is a contemporary 'beachy' version of the formal garden located on the ocean site.

The use of mass plantings of grasses, mixed perennials and native shrubs evokes wild landscape, while the geometry of formal hedges, terraces, pool and the 'lavender parterre' echoes the formal style of garden. Waves of plants balance the garden's hard lines.

Grasses and many perennials were selected to create a changing herbaceous palette in every season. Butterflies are frequent garden visitors that add another dimension to 'wild' perennial beds. Planting of shrubs and trees makes the garden feel like a part of its natural surroundings and provides necessary screening at the same time.



LANDSCAPE ARCHITECTS | SITE PLANNERS | DEVELOPMENT STRATEGISTS

AGAWAM STUDIO, 38 NUGENT STREET, SUITE B, SOUTHAMPTON, NEW YORK 11968  
P: 631.283.1131 | F: 631.283.6677 | E: INFO@ARAIYSDESIGN.COM | WWW.ARAIYSDESIGN.COM





### PLANTS OF THE SEASON

#### Native Plants Of The Season



Common Name: Eastern Red Cedar

Scientific Name: *Juniperus virginiana*

*Juniperus virginiana*, commonly known as Black Cherry, is a fast-growing medium sized tree with gray, scaly bark in mature. White, 5-petaled flowers in slender clusters bloom with foliage in late spring and then followed by berry-like fruits. Small cherries change from green to red and then become purple-black when they ripen in summer. It is also well-known by its attractive yellow to orange foliage fall color. Black cherry thrives in moist to slightly dry soil and prefers full sun to partial shade.



Common Name: : Switch Grass

Scientific Name: *Panicum virgatum*

*Panicum virgatum*, commonly known as Switch Grass, is a native, clumping-forming grass with finely textured, and reddish- seedhead. It typically grows 3 to 6 feet and 2 to 3 feet wide. It prefers full sun to partial shade and thrives in medium to wet soils. Green leaves turn into yellow in fall and gradually fades into tan-beige during winter season. Pink-tinged flowers bloom in July to February. Stiff and upright stems provide excellent winter interest. It is widely used in perennial borders, meadows or and naturalized areas.

#### Ornamental Plants Of the Season



Common Name: Yellow Twig Dogwood

Scientific Name: *Cornus sericea* 'Flaviramea'

*Cornus sericea* 'Flaviramea', commonly called Yellow twig dogwood, is a suckering, creeping deciduous shrubs. It can reach 5-6 feet and 5-6feet wide with compact habit. Fragrant, white flowers appear with dense clusters (cymes to 2.5" diameter) in late spring. White berries in summer attract birds. Greenish-yellow stems provide striking winter color, which is the most remarkable ornamental feature of this plants. It prefers sun to light shade and thrives in moist to wet, well-drained soil but can adapt to a range of soil types. This plant can be combined with red twig dogwoods for interesting color contrast in winter.



Common Name: River Birch

Scientific Name: *Betula nigra*

*Betula Nigra*, commonly known as River birch, is a vigorous and medium size tree with year-round interest. River birch can be grown as either a single trunk or multi-trunked tree. It is desirable for ornamental plantings because of its graceful pyramidal to rounded form and attractive peeling bark for winter interest. Green leaves turn yellow in fall. Showy flowers appear in early spring and the cone-like fruits mature in late spring or early summer. River birch can reach as tall as 40-70' at maturity and 40-60' wide. It prefers full sun to partial shade in moist soil.